

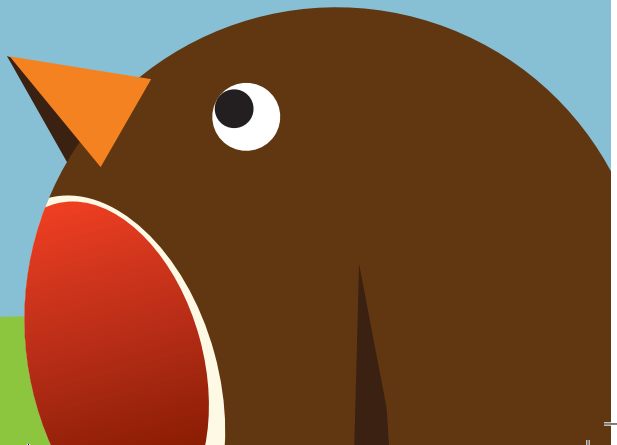
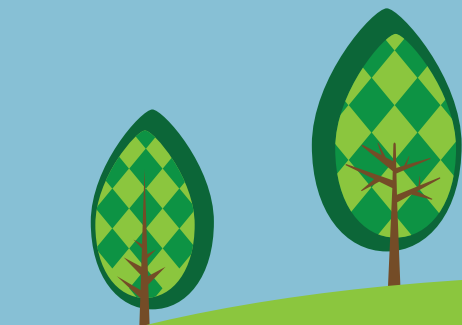
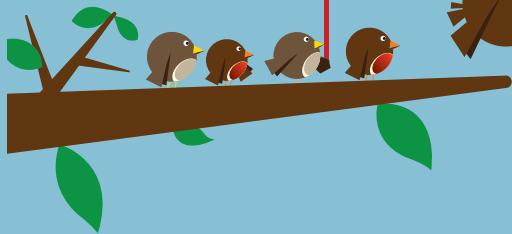
PROSPECTUS

Newchurch C.P. School



Preparing To Fly

Newchurch



Dear Parents,

I am very proud to be the headteacher at Newchurch Community Primary School. We are a school which has a sense of community and belonging; pupils, staff, families and governors are working together with one aim to make the school the best it can be. Newchurch has established itself a reputation as a school which achieves high standards whilst developing confident and happy citizens for the future.

Our latest Ofsted report (January 2016) states:

‘As headteacher, you provide strong direction for the school, have high ambitions and are determined that Newchurch should be an outstanding school in the near future.’

We hope you find the information in this prospectus useful in selecting a school for your child. We know this is an important decision for your family and must be carefully considered. We are proud of our school and would welcome the opportunity to share with you our vision for Newchurch Community Primary School.

We place great value on our partnership with you and warmly invite you to visit our school. We look forward to meeting with you and answering any questions you may have for us.

Best wishes,

Mrs S. Lawrenson
Headteacher



Mission Statement

NEWCHURCH WILL GIVE EVERY CHILD
A FLYING START BY WORKING IN
PARTNERSHIP WITH PARENTS, STAFF
AND THE COMMUNITY TO DEVELOP
AND CELEBRATE WELL-ROUNDED
CITIZENS WHO WILL CONTRIBUTE IN
A POSITIVE WAY TO SOCIETY.





GOVERNORS

LOCAL EDUCATION AUTHORITY

Mrs Jean Williams

STAFF (TEACHER) REPRESENTATIVES

Mrs Sara Lawrenson
(headteacher)
Mrs Jayne Narraway

PARENT REPRESENTATIVES

Mrs Farhaana Morton
Mrs Wendy Rostron
Mrs Janine Dowling
Mrs Rachel Burns

CO-OPTED GOVERNORS

Mr Bruce Deakin
Mrs Naomi Simpson
Mrs Anthea Ray
Mr Chris Hunt
Mr Graham Corkin



TEACHING STAFF

HEADTEACHER

Mrs S Lawrenson

DEPUTY HEADTEACHER

Mrs J Narraway

RECEPTION TEACHER

Mrs R Sizer

YEAR ONE TEACHER

Mrs R Wormleighton

YEAR TWO TEACHER

Mrs D Conreen

YEAR THREE TEACHER

Miss H Brinksman

YEAR FOUR TEACHER

Mr L Singleton

YEAR FIVE TEACHER

Mr N Tattersall

YEAR SIX TEACHER

Mr J Duckett

SUPPORT TEACHER

Mrs J Mowbray

TEACHING ASSISTANTS

Mrs S Storey

Mrs L Wilkinson Gamble

Mrs L Worthington

Mrs S Price

Mrs T Dixon

Mrs H Urmston

Miss E Ingham

ADMIN STAFF

Mrs B Heath

MAINTENANCE OFFICER

Mr N Owen

COOK

Mrs J France

MIDDAY ASSISTANTS

Miss L Ashcroft

Miss A Wright

Mrs P Adair

Miss E Ingham

Mrs S Storey

Mrs S Price

Miss R Sullivan



NEWCHURCH COMMUNITY PRIMARY SCHOOL

Admissions Policy

Children may start school during the academic year, that is from September 1st to August 31st, in which they are 5. Admission to any school depends on meeting certain criteria according to Government regulations, this relates to siblings already in school and permanent place of residence. Our admission limit is 30 and in the event of over-subscription, these criteria will need to be applied. For full details of the procedures please contact the school.

Prospective parents and their children are welcome to come into school at any time although it is advisable to make an appointment. New children will have opportunities to meet their teacher and feel confident in their new surroundings before starting school. New parents are invited to meetings to gather information and meet staff prior to their child starting school.

We hope that Reception pupils will be in school on a full-time basis by the end of the first full week of the Autumn term.

Open Access

We have three Open Evenings each year for individual discussions with the class teacher and two Open Afternoons in the Autumn term when the school can be seen at work.

To facilitate transition into the next school year, we invite parents in to meet their child's new class teacher and information is shared.

We also hold 'Invite a Guest' sessions where parents can come into school and work alongside their child completing fun activities linked to the curriculum.

Teachers are always willing to discuss your child's development at any time through the year although it is advisable to make an appointment.

Parent Teacher Association

All parents are encouraged to become involved in the activities of our Parent Teacher Association. It has an important social, financial and educational function, promoting co-operation and understanding between school and home.

Many events are organised by the PTA over the school year; for example, discos, barbecues, balls, bingo nights to name a few.

Over recent years, the children have benefitted from new trim trail playground equipment, Early Years outdoor learning environment, four all weather football pitches, 32 iPads and an online subscription to the learning resource Espresso.



PROSPECTUS 2018/19

www.newchurchprimary.co.uk

NEWCHURCH COMMUNITY PRIMARY SCHOOL

The Organisation of Teaching and Learning

Registration

8.55am

Morning Break for Key Stage 1 and Key Stage 2

We operate a flexible playtime system where the class teacher will take their own class out for fifteen minutes.

Dinner for Reception and Year 1

11:45am—12:45pm

Dinner for Year 2

12 noon - 1.00pm

Dinner for Year 3, Year 4 and Year 5

12.15am - 1.00pm

Dinner for Year 6

12:30pm - 1:15pm

Assembly

2.45pm - 3.10pm

Key Stage 1 Finish

3.10pm

Key Stage 2 Finish

3.15pm

Timetable

The children are organised into seven classes under the care and supervision of a class teacher. The classes consist of children of mixed abilities within one age range.

School Dinners

Varied school dinners are prepared on the premises and are of a very high standard of nutrition. We operate a cash cafeteria system. Children should bring in their dinner money each morning in an envelope or purse bearing their child's name. This is handed

to the school cook directly at dinnertime. As of September 2014, all children in the Early Years and Key Stage One are entitled to a free school meal. If you feel your child is eligible for free school meals, but not in Key Stage One, please contact the school office for details.

Children may bring packed lunches to eat in the dining room, or may go home for lunch. Children going home should not return to school until five minutes before their class is due in from lunchtime.

PROSPECTUS 2018/19

www.newchurchprimary.co.uk

HOLIDAY LIST 2019-2020

SCHOOL YEAR 2018/19

School Closes

School Opens

		Tues 4 Sept 2018
Autumn Half Term	Fri 19 Oct 2018	Mon 30 Oct 2018
Christmas	Fri 21 Dec 2018	Thurs 4 Jan 2019
Spring First Half Term	Fri 15 Feb 2019	Mon 25 Feb 2019
Spring Second Half Term	Fri 9 Apr 2019	Tue 23 April 2019
May Day Bank Holiday	Mon 6 May 2019	
Summer Half Term	Fri 24 May 2019	Mon 10 June 2019
Summer Holiday	Fri 19 July 2019	

2019/20

		Tues 3 Sept 2019
Autumn Half Term	Fri 25 Oct 2019	Mon 4 Nov 2019
Christmas	Fri 20 Dec 2019	Mon 6 Jan 2020
Spring First Half Term	Fri 14 Feb 2020	Mon 24 Feb 2020
Spring Second Half Term	Fri 3 Apr 2020	Thurs 16 April 2020
May Day Bank Holiday	Mon 4 May 2020	
Summer Half Term	Fri 22 May 2020	Mon 8 June 2020
Summer Holiday	Fri 17 July 2020	

School Uniform

The school uniform consists of a white polo shirt and red sweatshirt or fleece embroidered with the school's logo to be worn with a grey skirt or trousers. Black school shoes should be worn.

Customised items are available through Cactus Clothing, Unit 6, The Warehouse Studios, Glaziers Lane, Culcheth.

After Easter, red gingham summer dresses may be worn. The children will need black shorts, a white tee shirt and a pair of pumps for PE. This kit should be kept in a pump bag. Marking of all belongings would be very much appreciated.



PROSPECTUS 2018/19

www.newchurchprimary.co.uk



A STATEMENT OF PHILOSOPHY

All children are entitled to high quality educational experiences which will enhance self esteem, skills, knowledge and personal satisfaction. We believe they learn best in a caring and stimulating atmosphere. Our achievement of this is confirmed by Ofsted:

‘The parents and grandparents to whom I spoke were unanimous in complimenting the school. They commented on how enthusiastic their children are about coming to school, on how well they are progressing and on the high level of care and support shown by staff at all levels.’ Ofsted January 2016:

AIMS OF THE SCHOOL

Our aims are to encourage pupils to develop lively, inquiring minds, the ability to question and argue rationally and to apply themselves to their tasks.

To instill respect for moral values, for other people and oneself and tolerance for other races, religions and communities.

Respect and value the diverse nature of society in preparation for life in the wider community.

Help children understand and care for the world in which we live and recognise their responsibilities.

Encourage children to use language accurately, effectively and imaginatively in speaking, reading and writing.

Provide a basis of mathematical, scientific and technical knowledge, enabling children to learn essential skills in a fast and changing world.

Help children to develop physical skills and positive attitudes towards healthy living, personal fulfilment and team spirit.

Teach children about human achievements and aspirations in arts, sciences and religion and provide opportunities for the children to express and develop their creativity and spirituality.

Encourage and foster the development of all children according to their individual needs and abilities.

NEWCHURCH COMMUNITY PRIMARY SCHOOL

Respecting Differences Between Individuals

In recognising that children and adults are individuals, the school acknowledges that they have different experiences and may come from contrasting cultural backgrounds. Its policies on Equal Opportunities, Race Equality and Disability reflect a clear commitment to treat all members of the school community fairly.

Acts of Worship

The children all participate daily in a collective act of worship which is broadly Christian in character. The assemblies also encompass social and moral education and promote a knowledge of living faiths. Parents have the right to withdraw their child from assemblies and should inform the school of their wishes.

Teaching and Learning at Newchurch

The curriculum at Newchurch has a child-centred approach to teaching and

learning. The individuality of the child and their ability to process the information they receive is a constant source of interest and challenge to us all.

We develop each child's potential by ensuring that they have a safe and secure place to learn. We incorporate the different learning styles in our teaching and learning activities. That is the Visual (seeing) the Auditory (speaking and listening) and the Kinaesthetic (doing and relating to) styles of learning.

Each teacher understands that children learn in different ways. We adjust and adapt our methods to suit our learners. We group children in different ways to maximize learning opportunities and actively promote collaborative learning and independent thinking.

We are constantly working to evaluate and develop our environment with advice from our stakeholders to make Newchurch Primary a stimulating and enjoyable place to learn.



PROSPECTUS 2018/19

www.newchurchprimary.co.uk

NEWCHURCH COMMUNITY PRIMARY SCHOOL

The Curriculum

The School 'Curriculum' consists of everything we teach and everything that the children learn from school. Our curriculum encompasses the Statutory National Curriculum and our own beliefs and aims, to enable pupils to enjoy and profit from their present life as children, as well as being prepared for adult life.

The following core and foundation subjects will be taught for an appropriate amount of time, so as to achieve the attainment targets for the relevant stages, Key Stage 1 for children of 5 to 7 years and Key Stage 2 for children of 7 to 11 years. As a school we have developed a bespoke creative enquiry based curriculum which aims to engage all pupils in a love of learning.

Core Subjects

Mathematics
English
Science

Foundation Subjects

Geography
Computing
History
Design and Technology
Art
Music
Physical Education
Religious Education
Modern Foreign
Languages (KS2)

EYFS Areas of Learning

Prime Areas:
Personal Social and Emotional
Development,
Communication and Language
Physical Development
Specific Areas:
Literacy
Mathematics
Understanding the World
Expressive Arts and Design

We follow the National Curriculum (2014) to ensure entitlement, continuity and coherence in establishing standards, which are understood by the school and society. We are very proud of our curriculum design which is bespoke to our school yet fulfils the statutory requirements of the National Curriculum. Teachers' talents and knowledge of the children's interests have been used to develop our curriculum.

Our curriculum can be seen on the school website www.newchurchprimary.co.uk

The school curriculum is delivered using school-generated planning systems which are carefully monitored. This work forms the basis of discussions with the Governing Body to inform policy and practice.

PROSPECTUS 2018/19

www.newchurchprimary.co.uk

NEWCHURCH COMMUNITY PRIMARY SCHOOL

Homework

We aim to consolidate and reinforce the school work through homework which is part of our homeschool partnership to improve your child's education particularly in English and Mathematics.

We encourage and appreciate the active involvement of parents or other adults in helping children to consolidate and develop their knowledge / skills through homework Reading Record Books or Homework Diaries are used to assist such communication. All children are encouraged to read at home on a daily basis from their very first days in school. Other tasks are introduced as appropriate to a child's age. In the summer term, all pupils are asked to produce a project based on a theme. This forms part of a whole school exhibition to celebrate and acknowledge the children's achievements.

Theme Days

Throughout the year theme days are held linked to a particular subject. These days are lots of fun whilst ensuring effective learning for our pupils based on a specific subject. Provision for learning is enhanced on these days by the inclusion of visits and visitors to the school e.g. dancers, mechanics, the armed forces, etc.

Artsmark Award

We are currently working towards the renewal of our Arts Mark Gold Award, which recognises our commitment to, and our enthusiasm for, all areas of the Arts.

Sports Mark

We have achieved the Sports Mark which recognises the excellent the excellent sports provision we have available to all children, e.g. rounders, cricket, tennis, cheerleading etc.

Promoting British Values

We agree with the Department for Education's five part definition of British Values:

- Democracy
- The rule of law
- Individual liberty
- Mutual respect
- Tolerance of those of different faiths and beliefs

At Newchurch the children will encounter these values throughout our everyday school life. Our bespoke Personal, Social and Emotional Development Curriculum explores, explains and refines the children's understanding of the British Values named above.

Science Mark

This year we are going for gold!

The Healthy Child

All children take part in P E which includes dance, gymnastics, team games and development of skills appropriate to the children's age and ability. Years 3 and 4 have swimming lessons.

We encourage healthy eating and received the Healthy Schools' Award.

In year 6 and year 4 the children are taken to an outdoor educational centre for a residential. This experience develops their physical and social skills whilst also encouraging independence.

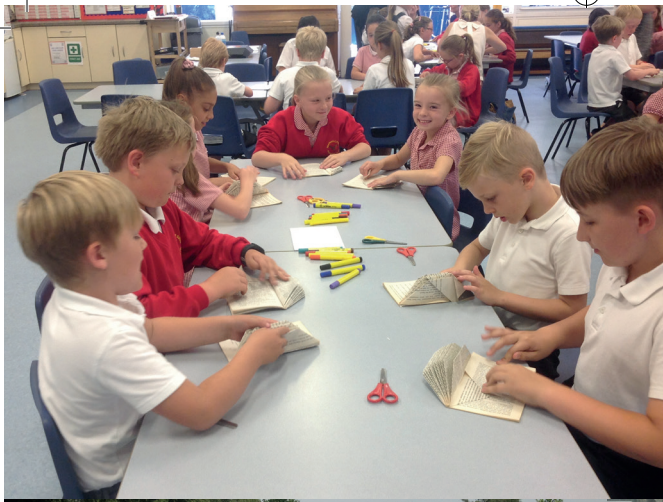
Throughout the year, a variety of sports coaches enhance our curriculum. We have been awarded the Active Mark for PE.

Extra Curricular Activities

Children may join a variety of lunchtime or after-school clubs covering activities like sports/ games, science, computer skills, choir, film club, art and gardening. These are organised by the staff and friends of the school.

PROSPECTUS 2018/19

www.newchurchprimary.co.uk



NEWCHURCH COMMUNITY PRIMARY SCHOOL

Performance Opportunities

Each year, we participate in the Primary Arts Network exhibition where the whole school produce art work linked to a given theme. This is displayed in the Pyramid Arts Centre alongside other schools in the network. In the autumn term, Junior children are given the opportunity to sing with other pupils (8000!) at the MEN Arena as part of the Young Voices choir. The older children may access specialised instrumental music tuition and ensemble work in school. We have a programme of tuition whereby music instructors visit the school and teach individual children. This is funded by the parents of the child receiving the tuition. For whole classes we access keyboard, guitar, Gospel Singing lessons, brass, handbells and samba drums. Each class gives a termly performance to their parents and families, with some classes performing at the end of the year alongside other schools at the Parr Hall, the Bridgewater Hall and the Liverpool Anglican Cathedral.

Assessment

We are continually improving our standards and results in all areas of the curriculum. We track children's progress effectively. Staff are pro-active in ensuring this system is efficient and useful in raising our standards of achievement for all.

Formal tests in English, Maths and Science during termly Progress Weeks inform our Assessment as well as rigorous moderation of levels to ensure accuracy.

During Parents' evenings you will be informed of these results and advised of any additional support your child may need.

Reporting to Parents

Full annual reports on your child's progress are sent home at the end of each year.

Children use reading record books to enhance communication. In addition, parents receive a forecast of the half term's work which enables them to support their children's learning. This is also available on the school website.

Pupils with Special Educational Needs and Disability will meet termly with the class teacher and/or the SEN co-ordinator to formulate a personalised plan to enable them to meet their learning outcomes.

Special Educational Needs

Children with Special Educational Needs and Disabilities are identified as soon as possible and supported according to their needs both from within the school and by outside agencies as appropriate. Children will have a personalised plan with specific targets to enable them to achieve. Further details of provision for children with Special Educational Needs and Disability can be found on the school website.

Gifted and Talented

We aim to quickly identify children with special aptitudes in all areas of the curriculum.

We use our school assessment systems to track their progress and encourage the development of these abilities through specific enrichment activities to target their needs. Parents have made very positive comments about the quality of provision.

PROSPECTUS 2018/19

www.newchurchprimary.co.uk

NEWCHURCH COMMUNITY PRIMARY SCHOOL

Pastoral Care and Discipline

Children are expected to behave in a civilised and caring manner towards each other and all adults in school. We aim to encourage the personal and social development of each child within the context of the whole school's needs.

Children who have difficulties with self discipline are treated firmly but fairly whilst being encouraged to recognise and regret their unacceptable behaviour. They are then supported in their positive efforts to re-establish themselves in the group. Parents will always be informed when their child's behaviour is consistently inappropriate.

Health and Hygiene

Medical examinations are carried out during the first and last year at primary school. All Children are given dental inspections, eye tests and hearing tests during the primary years. Parental consent is sought as appropriate.

All appropriate regulations and checks are carried out effectively. Pupils take part in termly fire drills to ensure their safety.

Attendance

Full attendance is essential for optimum progress. Parents/carers should phone school on the first day of absence. A pupil who has been absent is required to bring an explanatory note. Children are marked present if attending a clinic, hospital or dental appointment etc providing the class teacher is informed beforehand. For safety reasons, children having appointments during school hours must be collected from inside school premises by their parents. Parents must sign children out in the log.

You are asked to arrange holidays during school holiday periods. As a school we do not authorise holidays in term time.

We are now required to log all absences and report them to the Local Authority. The percentage of absences for the school September 2015-2016 were authorised 2.2% and unauthorised 0.6%. This reflects the number of parents removing their children from school during term time.

Relationships and Sex Education

The Governors have agreed to a school policy for Relationship and Sex Education to be delivered as part of the curriculum to all years. Prior notice will be given to parents regarding when this will be taught and year group planning can be found on the school website.

Accidents and Illness at School

If your child is taken ill at school or has an accident you will be contacted as soon as possible. A First Aid slip will be given to your child with details of their injury and the action taken. We need correct emergency contact telephone numbers so please provide us with this information and update it as required.

Medicines should not be brought to school unless absolutely necessary and then should be given to the class teacher by the parent and a permission form completed.

PROSPECTUS 2018/19

www.newchurchprimary.co.uk

NEWCHURCH COMMUNITY PRIMARY SCHOOL

Health and Safety

We operate a no-smoking policy.

We request that drivers do not use the school car park during arrival and departure times of the children. We have a designated disabled parking bay. We also request that you park safely near the school, showing respect and consideration for our neighbours. If you do need to park outside the school, please ensure that your engine is not running. We advise parking on the carpark at Sainsburys and walking to collect children.

Dogs should not be brought on to school premises.

For safety reasons, children may not wear any jewellery other than a watch. Children with pierced ears should wear stud type ear-rings only.

General Information

Parents are asked to note that the school does not accept any responsibility for loss of, or damage to, personal property whilst on the Authority's premises.

Charging - Remission Policy

The School Governing body has determined the following policy:-

For activities during school time including visits from outside speakers, workshops or visits by the children to places of educational interest, no charge will be made, but voluntary contributions will be invited. This also applies to transport for swimming where a nominal amount is requested. Parents will be informed of the amount of money required. For tuition in the playing of a musical instrument a termly charge will be made, payable to school. A full copy of the policy is available from the school and on the school website.



PROSPECTUS 2018/19

www.newchurchprimary.co.uk



NEWCHURCH COMMUNITY PRIMARY SCHOOL

COMPARATIVE REPORT

As a result of the changes to the assessment measures at the end of Key Stage Two, comparative data is no longer available. Teacher assessment is still submitted using different coding systems:

WTS– Working towards the expected standard

EXS – Working at the expected standard

GDS - Working at a greater depth within the expected standard

TEACHER ASSESSMENTS

	WTS	EXS	GDS
Reading	10%	46.7%	43.3%
Writing	20%	50%	30%
Mathematics	16.7%	50%	33.3%
Grammar, Punctuation and Spelling	3.3%	53.3%	43.3%
Science	16.7%	50%	33.3%

PROSPECTUS 2018/19

www.newchurchprimary.co.uk

NEWCHURCH COMMUNITY PRIMARY SCHOOL

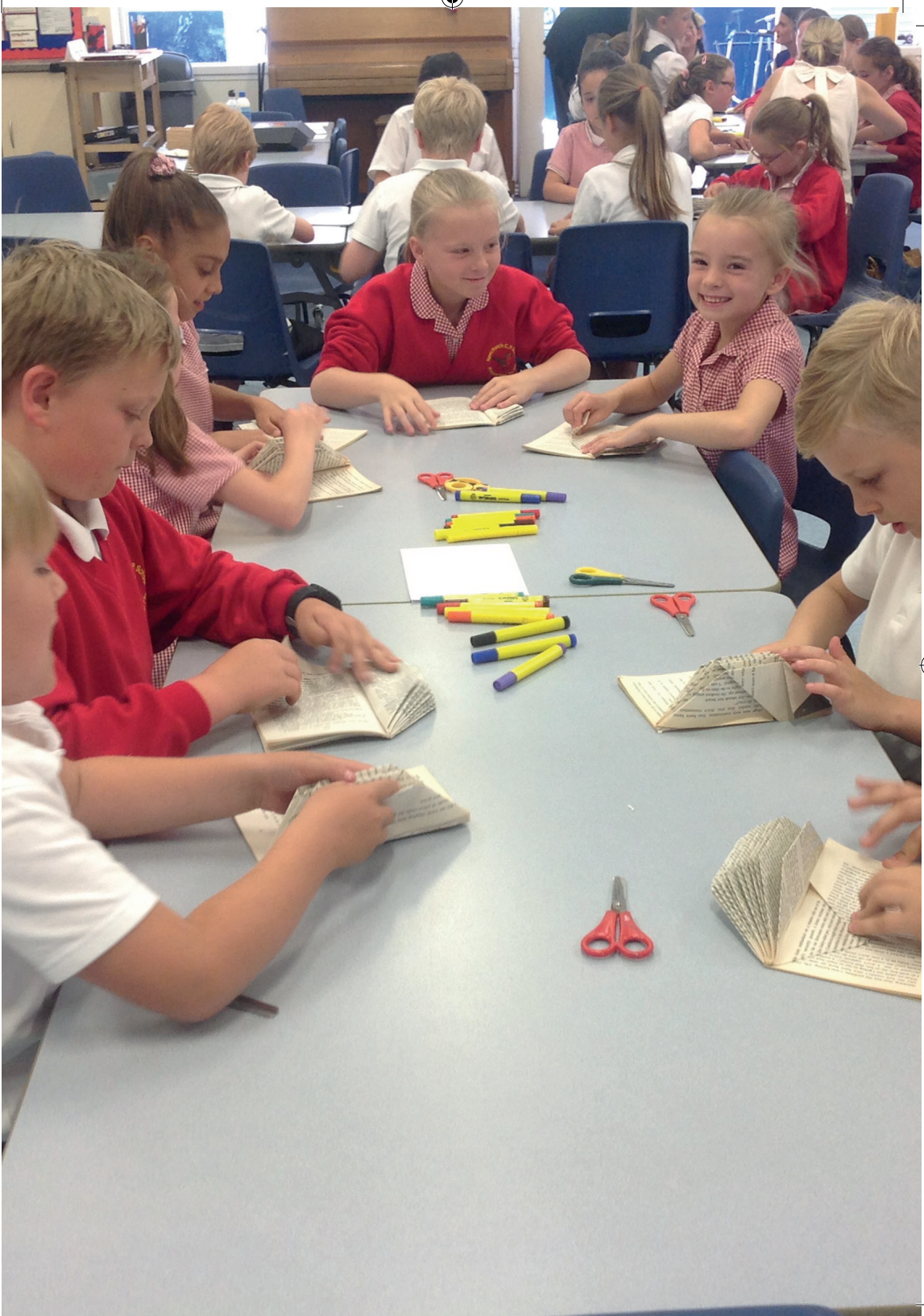
TEST RESULTS

This table shows the percentage of Year 6 pupils achieving the expected standard in 2016 against the criteria for the new standards.

	School	National
Reading	76.7% achieved the Expected Standard 30% achieved the Higher Standard (Greater Depth) Average Scaled Score 105	75% achieved the Expected Standard 27.9% achieved the Higher Standard (Greater Depth) Average Scaled Score 104
Writing (Teacher assessment)	83.3% achieved the Expected Standard 30% achieved the Higher Standard (Greater Depth)	78.0% achieved the Expected Standard and 19.7% achieved the Higher Standard (Greater Depth)
Mathematics	78.0% achieved the Expected Standard and 19.7% achieved the Higher Standard (Greater Depth)	76.0% achieved the Expected Standard 23.3% achieved the Higher Standard (Greater Depth) Average Scaled Score 106
Grammar, Punctuation and Spelling	96.0% achieved the Expected Standard 16.7% achieved the Higher Standard (Greater Depth) Average Scaled Score 107	Standard Higher Standard (Greater Depth) not available at time of printing Average Scaled Score 104

PROSPECTUS 2018/19

www.newchurchprimary.co.uk



FURTHER INFORMATION FOR PARENTS

Please refer to our school website for our policies and further information.

The information in this prospectus relates to the year 2017/2018. Although correct at the date shown below there may be changes during the school year.

‘Pupils’ learning benefits from a challenging and well planned curriculum which meets their needs well and fosters their enjoyment of learning and their good spiritual, moral, social and cultural development.’

Ofsted January 2012:

Please do not hesitate to contact the Headteacher for further information.

School Website

www.newchurchprimary.co.uk

Twitter

@newchurchcp

Full Ofsted report available from

www.ofsted.gov.uk





Newchurch Community Primary School

Glebeland Culcheth Warrington WA3 4DX

Telephone

01925 763427

Facsimile

01925 766045

www.newchurchprimary.co.uk

Email

newchurch_primary@warrington.gov.uk

Twitter

@newchurchcp

Headteacher

Mrs S. Lawrenson

WARRINGTON
Borough Council



Design by Charlie charlie@charliebattersby.plus.com