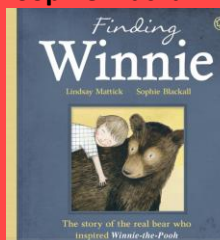


# Newchurch Community Primary School - Share in our learning...Year 6 Autumn B

## English:

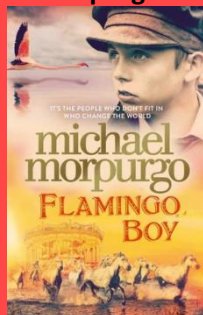
### Reading:

**Finding Winnie**  
– Lindsay  
Mattick &  
Sophie Blackall



Our class text is Finding Winnie. The beautifully written story (based on real life events) details the relationship between a Canadian soldier and a wild bear whom he rescues from a bear trapper. The story ends with quite a remarkable twist which always leaves the reader surprised!

**Flamingo Boy**  
– Michael  
Morpurgo

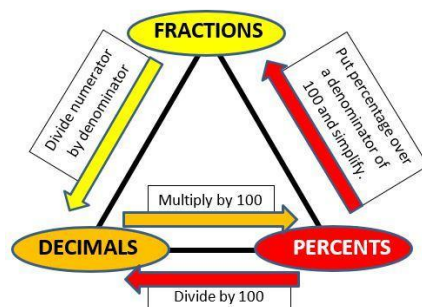


We continue with our story of three young poverty-stricken who believe their lives will change for the better when they find a wallet full of money. Little do they know they will end up embroiled in political corruption with monumental repercussions.

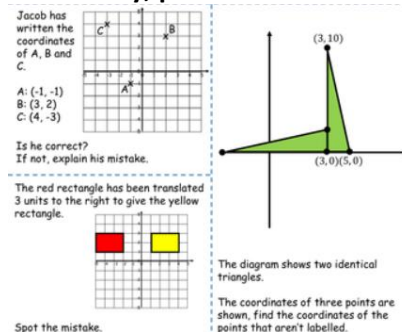
## Mathematics:

Along with our arithmetic and calculation skills we will be looking at the following areas of the curriculum:

### Fractions, decimals & percentages



### Geometry, position & direction



We will be looking to master a wide range of targets linked to these areas, such as:

- Use common factors to simplify fractions; use common multiples to express fractions in the same denomination
- Add and subtract fractions with different denominators and mixed numbers, using the concept of equivalent fractions

## Science:



Our scientific studies will focus on **Electricity**.

We will build on our prior knowledge from learning about electricity in Year 4 by building more complex circuits with a greater range of components, identifying, and fixing faults in a circuit, understanding and using symbols to represent components and associating the effectiveness of components with the number of voltage and cells within the circuit.

Useful websites

<https://www.bbc.co.uk/bitesize/topics/zbssgk7>

<https://www.stem.org.uk/resources/community/collection/12741/year-6-light>

Places to visit: Imagine That, Liverpool



## Writing: Biography

We will be using our class texts to focus on the following targets in our grammar and writing:

- Use relative clauses beginning with who, which, where, when, whose, that or an omitted relative pronoun
- Use a wider range of devices to build cohesion e.g. conjunctions, synonyms, adverbials, punctuation
- Use a colon to introduce a list and use semi-colons within lists
- Use hyphens to avoid ambiguity

- Multiply simple pairs of proper fractions, writing the answer in its simplest form [for example,  $\frac{1}{4} \times \frac{1}{2} = \frac{1}{8}$  ]
- Compare and classify geometric shapes based on their properties and sizes and find unknown angles in any triangles, quadrilaterals, and regular polygons
- Illustrate and name parts of circles, including radius, diameter and circumference and know that the diameter is twice the radius

### Useful websites:

<https://www.satpapersguide.co.uk/sats-information/free-sats-resources/free-maths-sats-resources/fractions-decimals-percentages/>

### Geography:

Geographical skills and fieldwork will be combined with developing the children's knowledge and understanding of the local environment. In order to do this, the children will:

- use maps, atlases, globes and digital/computer mapping to locate countries and describe features studied
- use the eight points of a compass, four and six-figure grid references, symbols and key (including the use of Ordnance Survey maps) to build their knowledge of the United Kingdom and the wider world
- use fieldwork to observe, measure, record and present the human and physical features in the local area using a range of methods, including sketch maps, plans and graphs, and digital technologies.

### Useful websites:

<https://kids.kiddle.co/Warrington>



## History:



Historical inquiry will be at the heart of our learning as we explore some of the major events of World War II and begin to consider how Warrington and its residents were affected by the events of the War. With the town being such a strategic town due to being home to Burtonwood Airbase, its industrial output and proximity to Manchester and Liverpool, it will be a fascinating insight for the children to understand more about how we played our part in overcoming the axis powers.

### Useful websites:

<http://www.rafburtonwoodheritagecentre.co.uk/>

<https://www.bbc.co.uk/history/ww2peopleswar/stories/19/a4647819.shtml>

## Poetry - Blitz - Mary Desiree Anderson



Linked closely to the writing text 'Finding Winnie', this poem will help to immerse the children in the themes of war and conflict.

The aim of the unit is for the children to write a narrative poem exploring the experience of the Blitz from the viewpoint of a child.

### Physical Education:



Hand-eye coordination and communication will be hugely important to success as Year 6 take on rounders in their PE lessons.



### Design & Technology:



The children have an exciting festive project on their hands as they look to build a model Christmas village. Using precise measurements, a range of materials and the tools required, the children will create their own concept and work collaboratively to build a model building. Linked to our learning in science, the children will then build electrical circuits to provide our village with moving parts, music and lighting.

Useful websites:

### Art:



Our first unit is **painting** and our focus will be on the work of Peter Fischli and David Weiss, who collaborated between 1979 and 2012

The children will utilise the photographic skills of our focus artists and utilise new technical skills such as layering to help produce abstract art.

#### Useful websites:

<https://www.tate.org.uk/whats-on/tate-modern/exhibition/fischli-weiss/fischli-weiss-room-guide-room-1/fischli-weiss-1>

In the run up to the Christmas production, the children will take inspiration from The Wisp unit to put together a song and dance for the festive performance.

<https://www.theschoolrun.com/key-stage-2-design-and-technology-what-children-learn>

#### Religious Education:



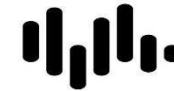
#### Christianity

In RE, we will be looking at what journeys life can take us on and linking them to some inspirational stories of journey from the bible. Commitment will also be an important component of this unit of RE

#### Useful websites:

<https://www.bbc.co.uk/bitesize/guides/zdcbcj6/revision/5>

#### Music:



#### Songs of celebration

Year 6 children will be focusing on World War II in this unit and learning some of the most famous songs which were sung by both the soldiers on the front line, as well as loved ones back home to keep their spirits high. In this unit, the children will develop pitch and control as well as learn how to identify pitches and notate a melody using pitches. To enrich this, the children will also continue their gospel singing lessons with our partners from Accent Music.

#### Useful websites:

<https://www.youtube.com/watch?v=4b6DgeTf1BE>

#### PSHE:



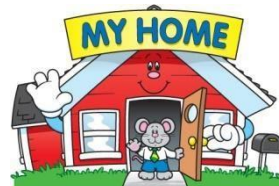
#### Respect

Expressing opinions and respecting other points of view, including discussing topical issues will be essential in this unit of the PSHE curriculum. We will be linking in these key components with anti-bullying week.

#### Useful websites:

<https://anti-bullyingalliance.org.uk/anti-bullying-week>

#### Languages:



#### Where I live, where you live

In this area of learning, the children will be able to articulate where they live, who with and briefly describing rooms and their local area. Through verbal communication, the children will be asked their peers about their hometown and respond accordingly.

#### Useful websites:

<https://www.youtube.com/watch?v=OZBiiiMhIGU>

<http://www.duolingo.com>

#### Computing:



#### Digital Content

The children will be inspired by an enjoyable Kahoot quiz and from this, they will be identifying ways to safely source, gather and store digital content to produce a quiz of their own to share with their peers.

#### Useful websites:

<https://kahoot.com>

<https://www.bbc.co.uk/bitesize/clips/zw8mtfr>



New to our PSHE curriculum this year is the 'MyHappyMind' programme. The children will learn about the importance of good mental health and learn about parts of the brain such as the amygdala, hippocampus and the prefrontal cortex. The children will be provided with strategies to promote and maintain good mental health.